

SURPASS EVERY EXPECTATION

with High Print Speed



 TZ-5320 Max. Print Width	NEW LUCIA TD ink	 FINE Full-photolithography Inkjet Nozzle Engineering	 AUTO Auto Media Detection
 L-COA PRO	 5pl Ink droplet size	 Line Accuracy: +/- 0.1% or less	 AUTO Estimation of Remaining Media
 Dual Roll System	 100 Sheets Top Delivery Tray	 Optional MFP	 500 GB Encrypted HDD
 Connectivity	 4.3" Colour LCD Touch Panel	 Auto Media Loading	

The new imagePROGRAF TZ series pushes the boundaries of productivity by offering high-speed printing, revolutionary media handling capabilities and advanced security features. Complete with seamless production workflow and all new MFP solution, the TZ series is designed to meet the demand of production Computer Aided Design (CAD), Geographical Information Systems (GIS) and graphic artwork markets.

BEST IN CLASS PRINT PERFORMANCE

With the adoption of twin carriage motors driving print head scanning, the TZ series is able to push print speed up to **four A1 prints per minute**, meeting the on-demand and higher print frequency requirements in the production CAD, GIS and graphic artwork markets.

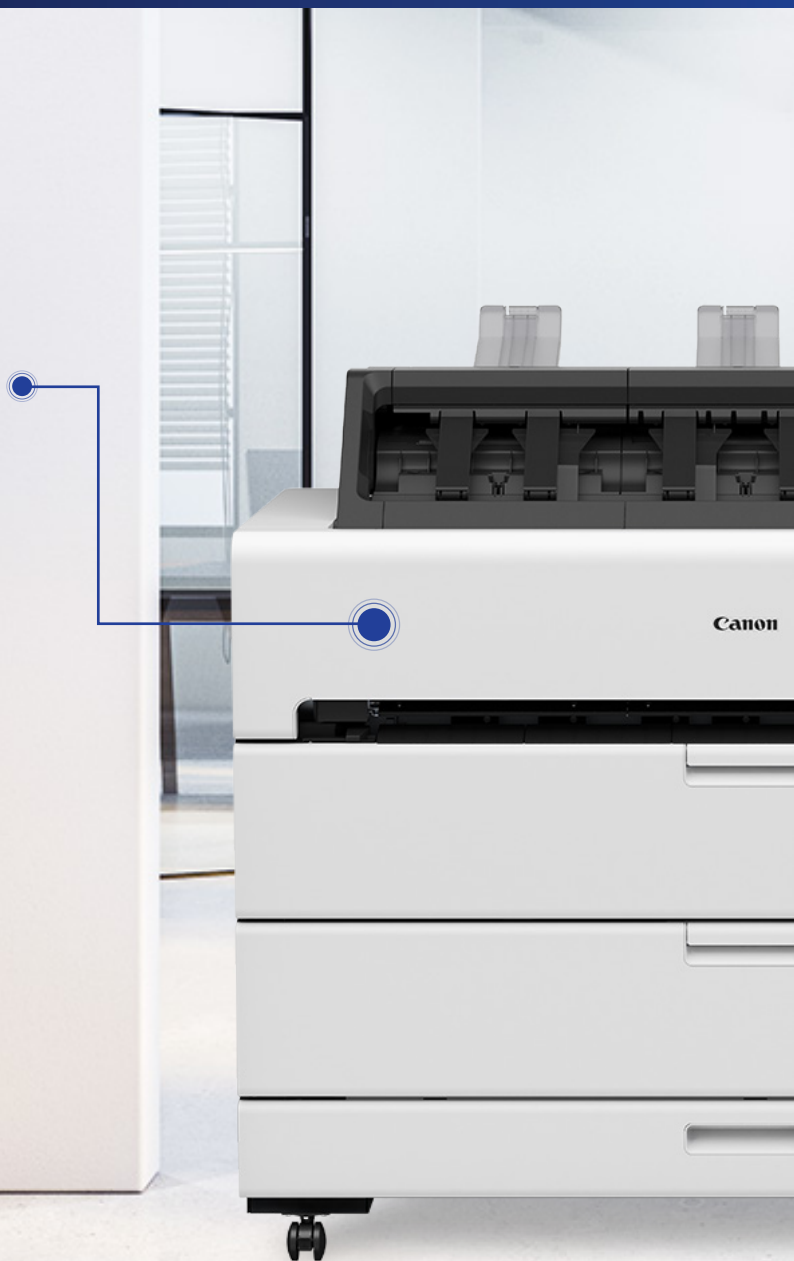
EXCELLENT PRINT QUALITY

The TZ series employs **L-COA PRO processing engine and FINE print head** technology, delivering outstanding print quality and accuracy at high speed. Non-firing nozzles detection will automatically compensate for nozzle blockage, ensuring best quality on every print. The **new LUCIA TD 5-colour all pigment ink** incorporate the **latest magenta ink** for improvement in red colour. The ink produces fine lines and sharp text with minimal feathering and is formulated to provide vibrant colours, dense black, excellent colour fastness and great weather resistance with water resistant media.



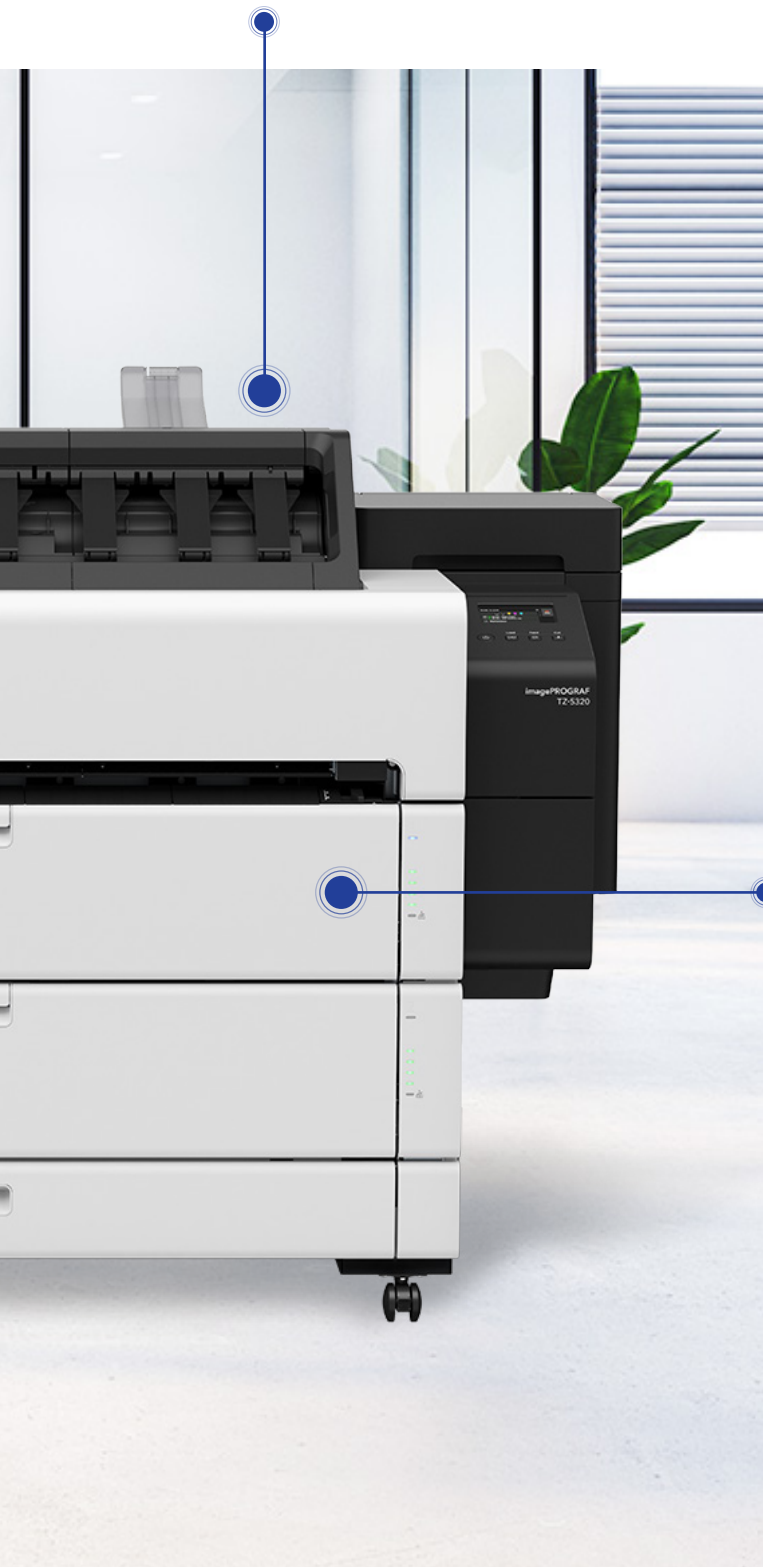
VIRTUALLY NO PRINTING LIMITS

Borderless printing is available on standard and custom sizes for all roll supported media. With additional feature such as three-sided edge-to-edge printing, the TZ series can handle any poster printing task with ease.



EXCEPTIONAL LEVELS OF PRODUCTIVITY

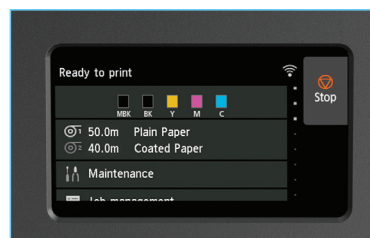
The TZ-5320 comes with **Dual Roll** that supports continuous printing and **hot-swapping of roll paper**. This allows a depleted second roll to be replaced even while printing, reducing time spent for paper replenishment and setup. The Top Delivery Tray can hold up to 100 sheets of A0-size plain paper, while longer, heavier media can be delivered to the front basket. **Hot-Swap Ink Tanks** allow empty tanks to be replaced on-the-fly without having to stop the printer.



Hot-Swap Roll Replacement

INDUSTRY LEADING MEDIA HANDLING CAPABILITY

Paper loading process could not be any more convenient - **With 34% faster** in roll media loading speed, expect higher productivity and shorter downtime. All that is needed is for a user to load a paper roll from the front, and the printer assumes total responsibility for paper loading and detection of media type, length, and width. Highly visual LED indicators on the printer body also serve to inform remaining roll paper while minimising user interaction with the operation panel and improving supplies management in the process. The operation panel allows a range of media selection whenever new media is loaded. It also displays the remaining roll amount and send out alert when media is not sufficient to complete the print job.



PROTECT YOUR PRINT ENVIRONMENT

The TZ series complies with the Advanced Encryption Standard (256-bit) established by the U.S. National Institute of Standards and Technology (NIST).



SECURE PRINTING



Keep confidential information secure by protecting the print job with passcode and delay print release until user enters passcode at the operation panel.

SECURE PROTOCOLS



Data are transmitted securely through secured protocols such as IPSec, SNMPv3, SSL/TLS and 802.1x authentication.

HARD DISK DRIVE ENCRYPTION



Print jobs and data are in safe hands with the TZ series, they are protected at all times by secured encryption.

FULL ADMINISTRATOR CONTROL



Administrator control makes it possible to restrict operation panel access and printer functionality according to users' level of security requirements.

SECURE DISK & FILE ERASURE



Data erasure overwrites and destroys overwritten data to ensure complete data destruction on the printer hard disk, providing complete data security.

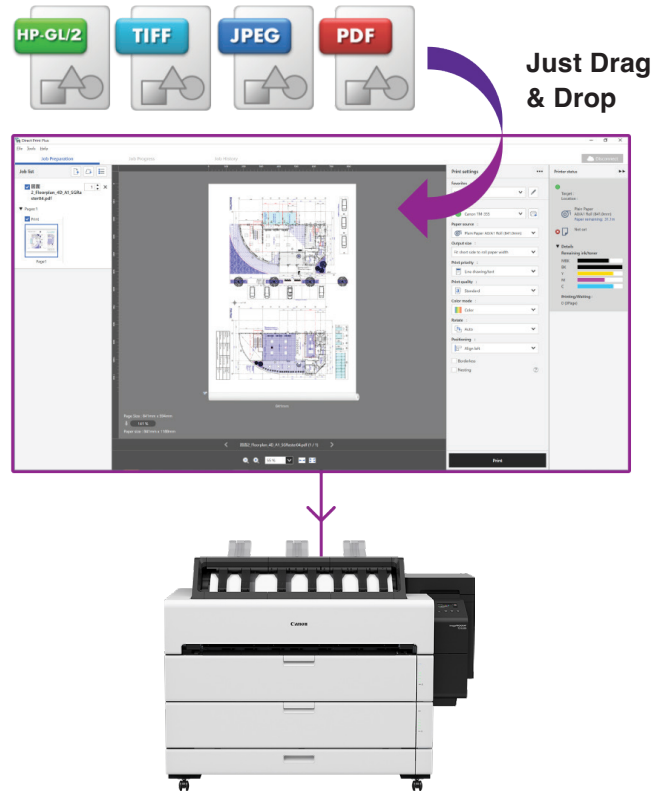


MANAGING YOUR PRINT JOBS HAS NEVER BEEN EASIER

Canon software applications are designed specifically to keep each print job on track and improve your workflow and productivity.

DIRECT PRINT PLUS

The newly developed print job submission tool makes workflow simpler and more efficient with features including shortcut printing, batch printing of multiple files, nesting and print job progress monitoring.



PRISMAPRODUCE TECH

PRISMA produce Tech is a powerful workflow application and user-friendly way to create document sets of dozen of files and submit them easily to imagePROGRAF printers.



ACCOUNTING MANAGER

Accounting Manager is ideal for businesses looking to track printing costs based on the cost of media and ink.



POSTERARTIST WEB

Canon's PosterArtist Web software lets you design and print professional looking posters with over 1,300 templates, photos and clipart to suit a wide variety of business environments. Creating head turning posters or signs has never been easier.



CANON PRINT

The Canon PRINT Inkjet/SELPHY app connects your mobile device wirelessly to the TZ series to print, scan and copy. It also works as a portal to manage your printer settings and monitor your printer status for a seamless printing experience.



FREE LAYOUT PLUS

Free Layout plus, a print utility that allows users to tile, nest and create custom layouts before printing.



MEDIA CONFIGURATION TOOL

Simplifies media management for Canon and third party media, allowing you to customise media in both the driver and printer for optimum print result.



DEVICE MANAGEMENT CONSOLE

Device Management Console effectively manages multiple printers, monitoring activities such as error messages and printer information like ink status and status of calibrations.

imagePROGRAF MFP SOLUTION

The new TZ series MFP solution provides maximum performance in scanning and copying with speed and precision while maintaining minimal footprint.

PARALLEL PROCESSING OF SCANNING AND PRINTING

Parallel processing significantly improves productivity and efficiency by performing print and scan operation simultaneously.

NEW SYSTEM CONTROLLER

The large 15.6" touchscreen panel system controller makes it easy to perform pre- and post-scan settings and preview before printing. Supports scanning files to network locations including cloud **Dropbox & Box**, save **multiple scan folder paths for each user** and scan to emails .

SINGLESENSOR, DUAL LED TECHNOLOGY

Patented SingleSensor covers the full width to ensure the finest text are reproduced without misalignment. Bi-directional illumination from dual LED reduces shadowing at creases or folds, ensuring high quality scanned image.

DIVERSE MEDIA SUPPORT

Front entry - rewind to front path makes it convenient for regular scanning of plain paper document, while the straight-through paper path accepts scan documents up to 1 mm in thickness.

SMARTWORKS MFP V6 WITH ABUNDANT FEATURES

The new SmartWorks MFP scanning software simplifies large format scanning and copying with intuitive user interface and image enhancement features such as the Auto De-skew function which provides optimal image alignment. Other features includes colour reversal of diazo print and restoration of deteriorated original images, which is useful for archiving old drawings.

SECURE YOUR BUSINESS

The closed system controller with present security software and TPM module for encryption, makes it a secure scanning solution. The presence of accounting and user & account customisation allows the administrator to set up company-specific around scanning and copying. This prevents failure costs and optimises user friendliness and productivity.



TZ-5320 MFP Z36

SPECIFICATIONS

PRINTER		TZ-5320
Printer Type		5-Colour 36" (914 mm)
Number of Nozzles		15,360 nozzles (MBK: 5,120 nozzles; BK, C, M, Y: 2,560 nozzles each)
Max. Print Resolution		2400 x 1200 dpi
Nozzle Pitch		1200 dpi (2 lines)
Line Accuracy ^{*1}		± 0.1 % or less
Min. Ink Droplet Size		5 pl
Ink Capacity	Sales Ink	330 ml / 700 ml (MBK, BK, C, M, Y)
	Bundled Starter Ink	330 ml (MBK) / 160 ml (BK, C, M, Y)
Ink Type		Pigment ink
Printer Languages		SG Raster (Swift Graphic Raster), HP-GL/2, HP RTL, PDF (Ver. 1.7), JPEG (Ver. JFIF1.02)
Print Solutions		Apple AirPrint, Direct Print Plus, CPP PRISMAproduce Tech, Easy-PhotoPrint Editor, Canon PRINT Inkjet(Mobile), Canon Print Service, Free Layout plus, PosterArtist Windows/Web/Lite, UniFlow
Management Solutions		Media Configuration Tool, Accounting Manager, Device Management Console, Quick Utility Box
Interface (Built-in)	Standard	Hi-Speed USB, Full Speed (12 Mbit/sec), Hi-Speed (480 Mbit/sec), Bulk transfer, Series B (4 pins), USB Memory (Direct Print)
	Network	IEEE 802.3 10base-T, IEEE 802.3u 100base-TX, IEEE 802.3ab 1000base-T, SNMP, HTTP, FTP, TCP/IP (IPv4/IPv6) WPA-PSK (AES), WPA2-PSK (AES), WPA3-SAE (AES), WPA-EAP (AES)*, WPA2-EAP (AES)*, WPA3-EAP (AES)* *IEEE 802.1X (EAP-TLS/EAP-TTLS/PEAP)
	Wireless LAN	IEEE802.11 b/g/n, WEP (64/128bit), WPA-PSK (TKIP/AES), WPA2-PSK (TKIP/AES)
Memory		Standard: 128 GB (Physical: 2 GB)
Hard Disk		500 GB (Encrypted)
PRINT SPEED ^{*2} (A0 SIZE)		
Plain Paper	CAD Drawing	26 sec [Fast (Custom Q5)] 35 sec [Fast] 1 min 6 sec [Standard]
	Poster	29 sec [Fast (Custom Q5)] 41 sec [Fast] 1 min 15 sec [Standard]
Heavyweight Coated Paper HG	Poster	2 min 34 sec [Standard]
Glossy Paper HG 170	Poster	5 min 14 sec [Standard]
MEDIA HANDLING		
Media Width	Roll Paper / Cut Sheet	203.2 ~ 914 mm
Media Thickness	Roll Paper / Cut Sheet	0.07 ~ 0.8 mm
Min. Printable Length	Roll Paper	Front Output: 203.2 mm, Top Output: 205 mm
	Cut Sheet	203.2 mm
Max. Printable Length	Roll Paper	18 m ³
	Cut Sheet	610 mm
Max. Roll Outer Diameter		175 mm or less
Media Feed and Output Method	Roll Paper	Dual Roll, Front Load, Top Output / Front Output ^{*4}
	Cut Sheet	Front Load, Front Output ^{*5}
Margins	Recommended Area	Roll Paper - Top: 20 mm, Bottom: 3 mm, Side: 3 mm Cut Sheet - Top: 20 mm, Bottom: 31 mm, Side: 3 mm (Apple AirPrint) Cut Sheet - Top: 20 mm, Bottom: 20 mm, Side: 3 mm (Others)
	Printable Area	Roll Paper - Top: 3 mm, Bottom: 3 mm, Side: 3 mm Roll Paper - Top: 0 mm, Bottom: 0 mm, Side: 0 mm (Borderless Print) Cut Sheet - Top: 3 mm, Bottom: 12.7 mm, Side: 3 mm (Apple AirPrint) Cut Sheet - Top: 3 mm, Bottom: 20 mm, Side: 3 mm (Others)
DIMENSIONS & WEIGHT ^{*6}		
Packaged Dimensions (W x D x H) Weight	Main Unit + Top Delivery Tray ^{*7} + Pallet	1704 x 946 x 1373 mm 277 kg
	Main Unit	1548 x 762 x 1126 mm (Basket Closed) 205 kg
Dimensions (W x D x H) Weight	Main Unit + Top Delivery Tray ^{*7}	1548 x 960 x 1189 mm (Basket Closed) 1548 x 1293 x 1428 mm (Basket Open) 206 kg
POWER AND OPERATING REQUIREMENTS		
Power Supply		AC 100 - 240 V, 50 - 60 Hz
Power Consumption	Operation	111 W or less
	Sleep Mode	1.6 W or less
	Power OFF	0.1 W or less
Operational Environment	Temperature	15 - 30 °C
	Humidity	10 - 80 % RH (no dew condensation)
Acoustic	Power ^{*8}	Operation: Approx. 70 dB
	Pressure ^{*8}	Operation: Approx. 52 dB (A) Standby: 35 dB (A) or less
OPTIONS		
2" / 3" Roll Holder		RH2-34
CONSUMABLES		
Ink Tank		Magenta: PFI-8341 (330 ml) / PFI-8741 (700 ml) Matt Black / Black / Cyan / Yellow: PFI-8340 (330 ml) / PFI-8740 (700 ml)
Print Head		PF-06
Maintenance Cartridge		MC-30

^{*1} User adjustments are required. Printing environment and media must match those used for the adjustments.
Paper required: Plain paper, CAD tracing paper, coated paper, CAD translucent matte film only.

^{*2} Time taken to print one page does not include time required for data processing, data transfer and pre-printing operations.

^{*3} Varies according to the OS and application.

^{*4} Media dependant. Print will be delivered face-down for top output, face-up for front output.

^{*5} For cut sheet, manual feed using media locking lever.

^{*6} Include roll holder set, exclude ink and print head.

^{*7} Top delivery tray consists of paper output support and top output guide.

^{*8} Measured using ISO 7779 standard by using 36" Standard Plain Paper 2, standard mode and line drawing / text mode.

imagePROGRAF TZ Series



SCANNER ^{*9}		Z36
Scan Width		36" (914 mm)
Min. Scan Width		6" (150 mm)
Max. Scan Length	JPEG / PDF	8 m
	PDF Long Scan	50 m (300 dpi)
	TIFF	15.2 m
Max. Copy Speed (inch/sec) ^{*10}	24-bit Colour	200 dpi: 6 ips / 152.4mm per sec 300 dpi: 4 ips / 101.6mm per sec 600 dpi: 2 ips / 50.8mm per sec
	8-bit Greyscale & Monochrome	200 dpi: 13 ips / 330.2mm per sec 300 dpi: 8.6 ips / 218.4mm per sec 600 dpi: 4.3 ips / 109.2mm per sec
Max. Scan Speed (inch/sec) ^{*10}	24-bit Colour	200 dpi: 3 ips / 76.2mm per sec 300 dpi: 2 ips / 50.8mm per sec 600 dpi: 2 ips / 50.8mm per sec
	8-bit Greyscale & Monochrome	200 dpi: 13 ips / 330.2mm per sec 300 dpi: 8.6 ips / 218.4mm per sec 600 dpi: 4.3 ips / 109.2mm per sec
Optical Resolution		1200 dpi
Document Handling ^{*11}		Front Load, Rear Output
Max. Document Thickness ^{*12}		1 mm
	Hard Disk	256 GB (Solid State Drive)
	Memory	8 GB (DDR 4)
	Display	15.6" multi-touch colour display
	Software Included	SmartWorks MFP V6
Scan Format		PDF / Multipage PDF / Multipage TIFF / JPEG / TIFF / DWF
Scan Functions		Copy, Scan, Print, Edit, Copy&Archive
Scan Destinations		USB, Network, Folder, Email, Cloud
Dimensions (W x D x H) ^{*13}		1056 x 251 x 156 mm
Weight	Scanner	7.8 kg
	System Controller	2.5 kg
Power Consumption (Scanner)	Operation ^{*14}	22.7 W (Colour) / 23.3 W (Greyscale)
	Sleep Mode	0.2 W
	Standby	12.4 W

*9 Scanner is designed by Global Scanning DK A/S. Scanner is supplied with TZ-5320 MFP Z36.

*10 The scan rate is proportional across the full range of resolutions supported by the scanner. Actual scan times and quoted top speeds will depend on the host performance and are not guaranteed for all media types. Scan times quoted are the maximum for true 200 x 200 dpi image capture.

*11 Thicker documents must be flexible and the document return guides removed and may require additional support. Some media should be scanned at reduced speeds. It is not possible to guarantee to be able to scan all media types and sizes.

*12 To return document to the front, use document return guides.

*13 Document return guides and paper tray folded.

*14 Power consumption is measured with scan resolution setting of 200 dpi.

Canon
Delighting You Always

CANON SINGAPORE PTE. LTD.
1 Fusionopolis Place, #14-10 Galaxis, Singapore 138522
Tel : 65-6799-8888 | Fax : 65-6799-8882 | <https://asia.canon>

CANON BUSINESS PARTNER / DEALER'S STAMP

This document is for general information only and contents are subject to change without notice. Errors and omissions excepted. Weights and dimensions are approximates. Options, name and availability may vary by regions. Nothing in this document should be construed as a warranty. We expressly disclaim any liability or contractual obligations in connection with this document. Trademarks belong to their respective owners.